

PHILIP WOOLLER

SOLD



AGNES ROAD W3 • ASKEW ROAD AREA
£1,150,000 FREEHOLD



- 4 double bedrooms
- Family bathroom
- Large master bathroom
- Double reception room
- Generous extended kitchen / dining room
- West facing garden
- Eaves storage
- Very quiet position

Type
Semi detached Edwardian family house

Gross internal floor area
1776 sq ft / 165 sq m approx. inc. eaves storage


Nearest stations
East Acton (Central Line) Stamford Brook (District Line) Shepherd's Bush Market (Hamm.& City and Circle Lines)

PHILIP WOOLLER

SOLD

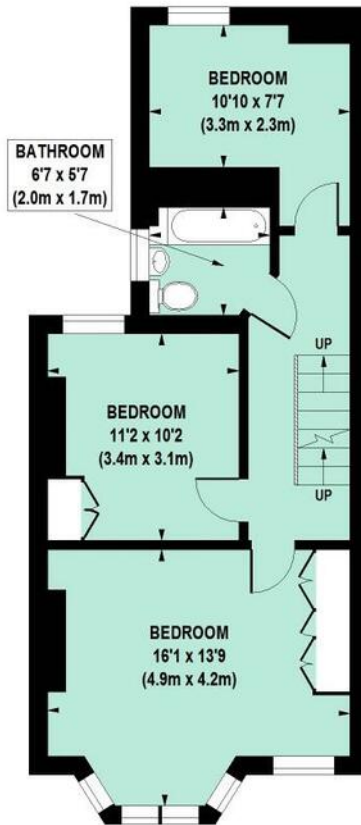
Agnes Road, W3

Approximate Gross Internal Area 165 sq m / 1776 sq ft
Including Eaves Storage 9 sq m / 97 sq ft

 Under 1.5m head height



GROUND FLOOR



FIRST FLOOR





SECOND FLOOR

Floor Plan produced for Philip Wooller by Mays Floorplans © . Tel 020 3397 4594
Illustration for identification purposes only, not to scale
All measurements are maximum, and include wardrobes and window bays where applicable

PHILIP WOOLLER

SOLD

Energy Efficiency Rating		Environmental Impact (CO ₂) Rating	
	Current	Potential	
<i>Very energy efficient - lower running costs</i>			
(92 plus) A			(92 plus) A
(81-91) B			(81-91) B
(69-80) C			(69-80) C
(55-68) D			(55-68) D
(39-54) E	48	49	(39-54) E
(21-38) F			(21-38) F
(1-20) G			(1-20) G
<i>Not energy efficient - higher running costs</i>			<i>Not environmentally friendly - higher CO₂ emissions</i>
England & Wales	EU Directive 2002/91/EC		England & Wales
			EU Directive 2002/91/EC
			

IMPORTANT NOTICE

1. Particulars: These particulars are not an offer or contract, nor part of one. You should not rely on statements by Philip Wooller Ltd in the particulars or by word of mouth or in writing ('information') as being factually accurate about the property, its condition or its value. Neither Philip Wooller Ltd nor any joint agent has any authority to make any representations about the property, and accordingly any information given is entirely without responsibility on the part of the agents, seller(s) or lessor(s).

2. Photos etc: The photographs show

only certain parts of the property as they appeared at the time they were taken. Areas, measurements and distances given are approximate only.

3. Regulations etc: Any reference to alternations to, or use of, any part of the property does not mean that any necessary planning, building regulations or other consent has been obtained. A buyer or lessee must find out by inspection or in other ways that these matters have been properly dealt with and that all information is correct.

4. VAT: The position relating to the property may change without notice.