

# PHILIP WOOLLER

## LET



GOLDHAWK ROAD W12 • STAMFORD BROOK  
£325 PW / £1408 PCM



- 1 double bedroom
- Bathroom en suite
- Cloakroom / WC
- Bay fronted reception room
- Kitchen / dining area open plan
- Storage
- Minutes from Stamford Brook Tube and Chiswick High Road

Type  
First floor flat

Gross internal floor area  
474 sq ft / 44 sq m approx.

Nearest stations  
Stamford Brook (District Line)  
Turnham Green Terrace (District and Piccadilly Lines)

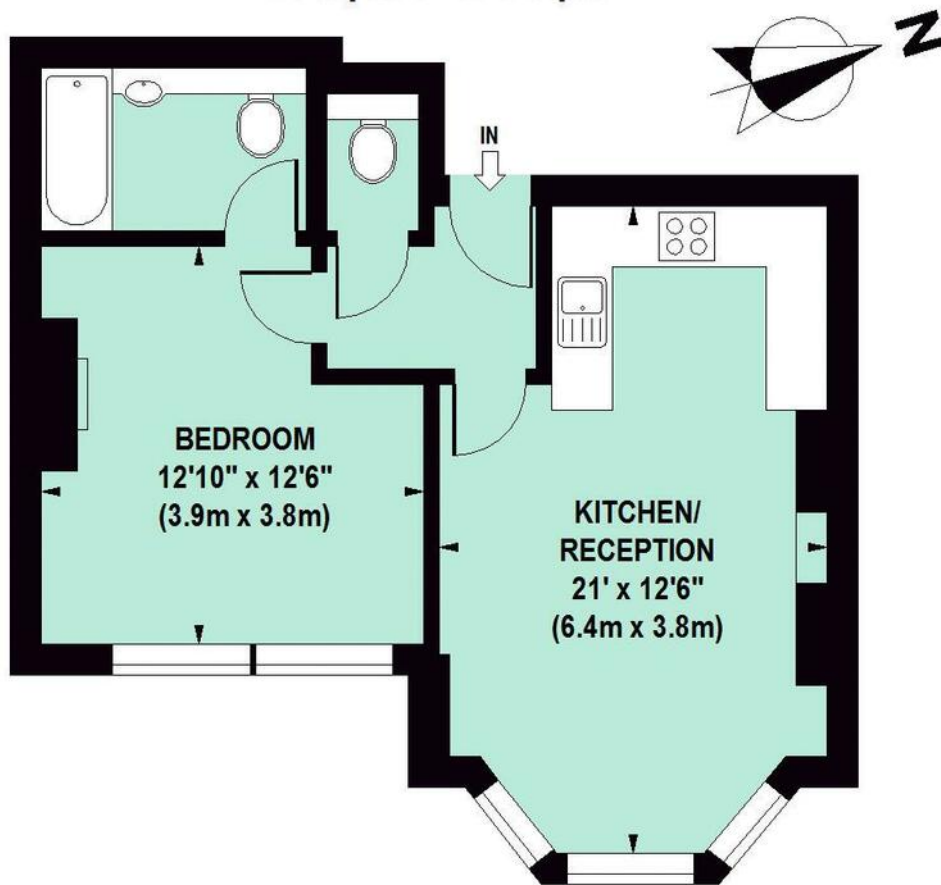
Council Tax Band  
C

# PHILIP WOOLLER

LET

## Goldhawk Road, W6

Approximate gross internal area  
44 sq m / 474 sq ft



### FIRST FLOOR

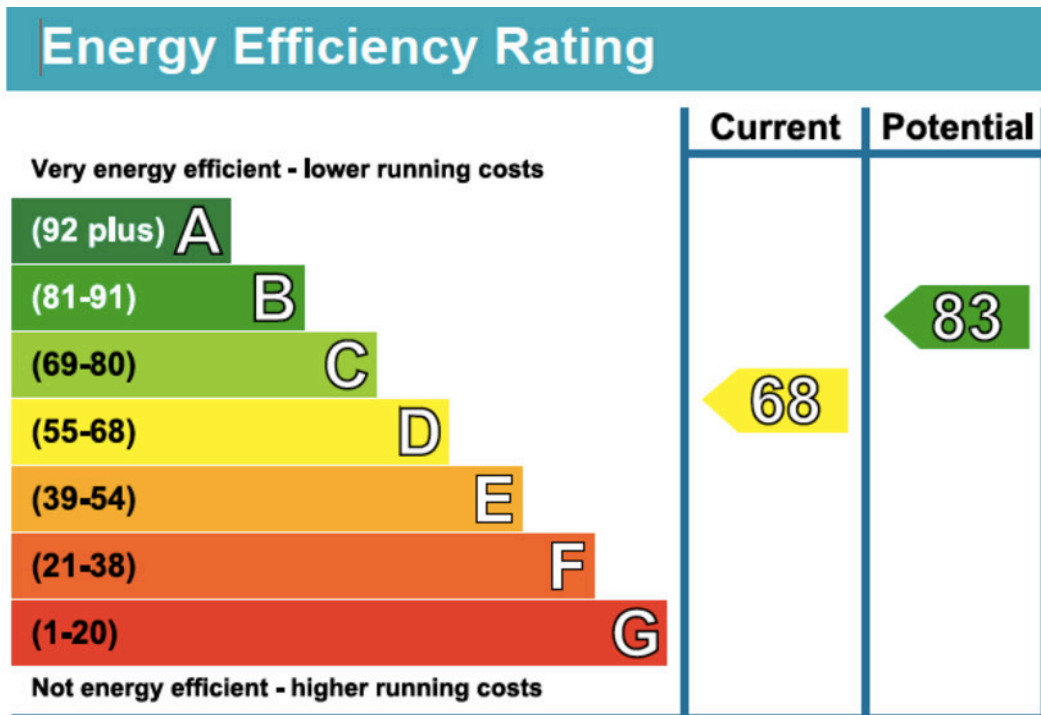
Floor Plan produced for Philip Wooller by Mays Floorplans © . Tel 020 3397 4594

Illustration for identification purposes only, not to scale

All measurements are maximum, and include wardrobes and window bays where applicable

# PHILIP WOOLLER

## LET



### IMPORTANT NOTICE

1. Particulars: These particulars are not an offer or contract, nor part of one. You should not rely on statements by Philip Wooller Ltd in the particulars or by word of mouth or in writing ('information') as being factually accurate about the property, its condition or its value. Neither Philip Wooller Ltd nor any joint agent has any authority to make any representations about the property, and accordingly any information given is entirely without responsibility on the part of the agents, seller(s) or lessor(s).

2. Photos etc: The photographs show

only certain parts of the property as they appeared at the time they were taken. Areas, measurements and distances given are approximate only.

3. Regulations etc: Any reference to alternations to, or use of, any part of the property does not mean that any necessary planning, building regulations or other consent has been obtained. A buyer or lessee must find out by inspection or in other ways that these matters have been properly dealt with and that all information is correct.

4. VAT: The position relating to the property may change without notice.