

PHILIP WOOLLER

LET AGREED



BASSEIN PARK ROAD W12 • ASKEW ROAD AREA
£325 PW / £1408 PCM



- One double bedroom
- Bathroom
- Reception room
- Kitchen open plan
- South facing roof terrace
- Good aspect and light
- Just off Askew Road
- On street resident parking permit available
- Leasehold covenants may apply

Type
Top floor flat with terrace

Gross internal floor area
474 sq ft / 44 sq m approx.

Nearest stations
Ravenscourt Park / Stamford Brook
(District Lines)

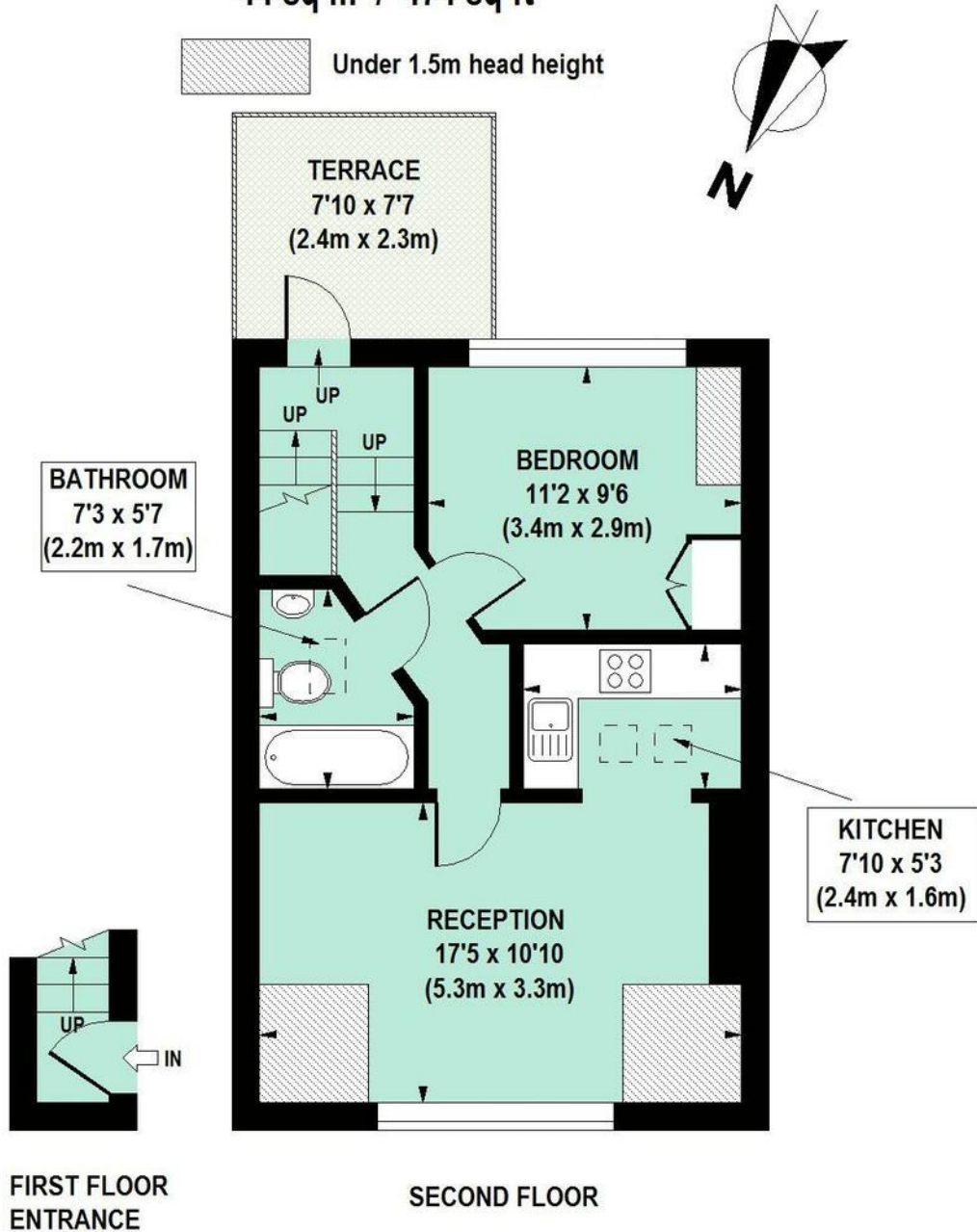
Council Tax Band
D

PHILIP WOOLLER

LET AGREED

Bassein Park Road, W12

Approximate gross internal area
44 sq m / 474 sq ft



Floor Plan produced for Philip Wooller by Mays Floorplans © . Tel 020 3397 4594

Illustration for identification purposes only, not to scale

All measurements are maximum, and include wardrobes and window bays where applicable

PHILIP WOOLLER

LET AGREED

IMPORTANT NOTICE

1. Particulars: These particulars are not an offer or contract, nor part of one. You should not rely on statements by Philip Wooller Ltd in the particulars or by word of mouth or in writing ('information') as being factually accurate about the property, its condition or its value. Neither Philip Wooller Ltd nor any joint agent has any authority to make any representations about the property, and accordingly any information given is entirely without responsibility on the part of the agents, seller(s) or lessor(s).

2. Photos etc: The photographs show

only certain parts of the property as they appeared at the time they were taken. Areas, measurements and distances given are approximate only.

3. Regulations etc: Any reference to alternations to, or use of, any part of the property does not mean that any necessary planning, building regulations or other consent has been obtained. A buyer or lessee must find out by inspection or in other ways that these matters have been properly dealt with and that all information is correct.

4. VAT: The position relating to the property may change without notice.