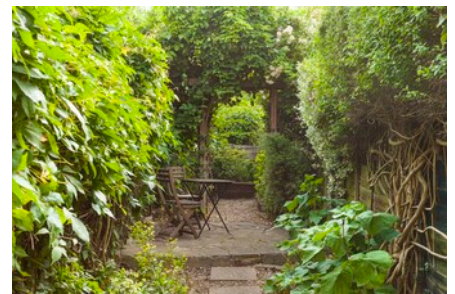
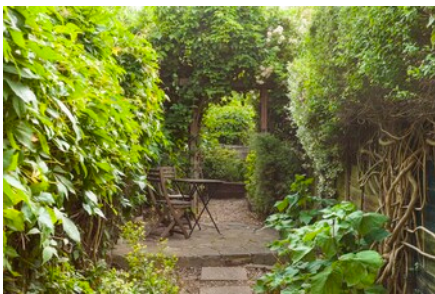


PHILIP WOOLLER

SALE AGREED



AYLMER ROAD W12 • WENDELL PARK
£575,000 LEASEHOLD



- Own ground floor entrance
- 2 double bedrooms
- Reception room
- Bathroom
- Established 70' garden
- Extremely quiet Wendell Park location
- Long lease - 140 years remaining.

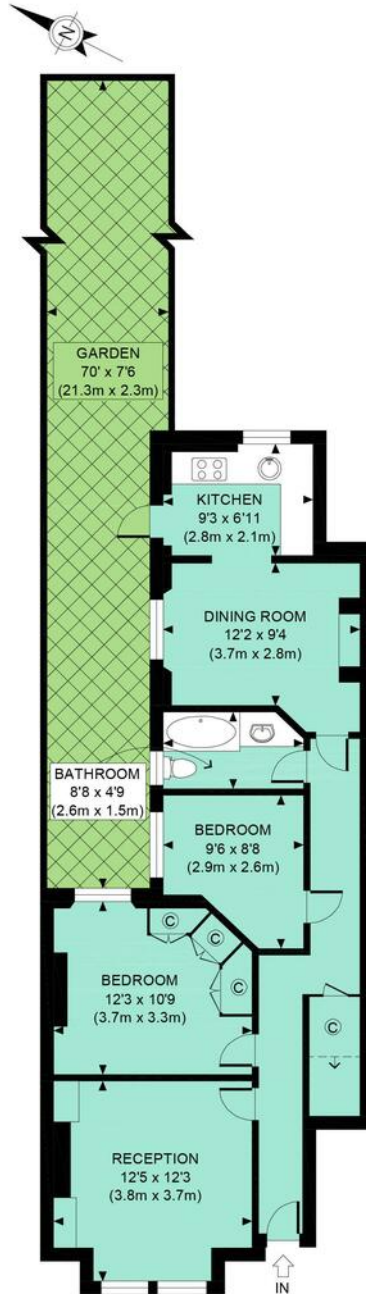
Type
Ground floor garden Flat

Gross internal floor area
717 sq ft / 67 sq m approx.

Nearest stations
Stamford Brook (District Line) and
Turnham Green Terrace (District and
Piccadilly Lines)

PHILIP WOOLLER

SALE AGREED



GROUND FLOOR
GROSS INTERNAL
FLOOR AREA 717 SQ FT

APPROX. GROSS INTERNAL FLOOR AREA 717 SQ FT / 67 SQM

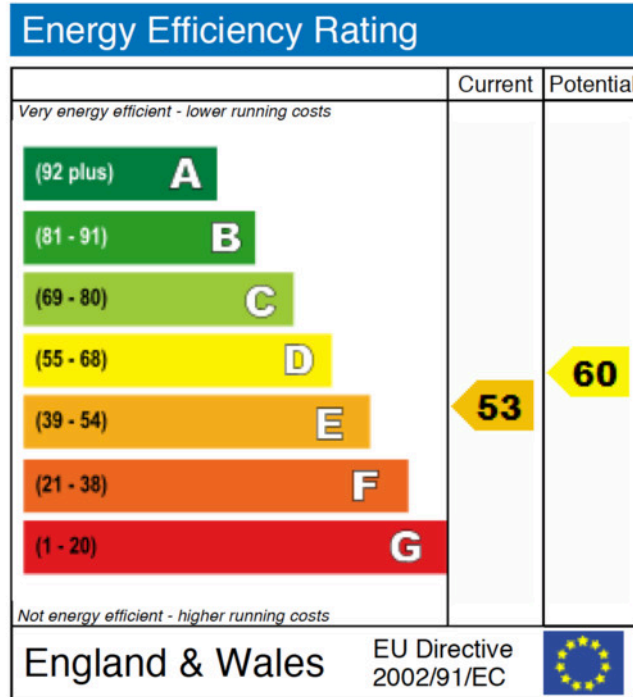
Ref: PW

Copyright **photoplan**

Disclaimer: Floor plan measurements are approximate and are for illustrative purposes only. While we do not doubt the floor plan accuracy and completeness, you or your advisors should conduct a careful, independent investigation of the property in respect of monetary valuation

PHILIP WOOLLER

SALE AGREED



IMPORTANT NOTICE

1. Particulars: These particulars are not an offer or contract, nor part of one. You should not rely on statements by Philip Wooller Ltd in the particulars or by word of mouth or in writing ('information') as being factually accurate about the property, its condition or its value. Neither Philip Wooller Ltd nor any joint agent has any authority to make any representations about the property, and accordingly any information given is entirely without responsibility on the part of the agents, seller(s) or lessor(s).

2. Photos etc: The photographs show

only certain parts of the property as they appeared at the time they were taken. Areas, measurements and distances given are approximate only.

3. Regulations etc: Any reference to alternations to, or use of, any part of the property does not mean that any necessary planning, building regulations or other consent has been obtained. A buyer or lessee must find out by inspection or in other ways that these matters have been properly dealt with and that all information is correct.

4. VAT: The position relating to the property may change without notice.