

PHILIP WOOLLER

SOLD



ST ELMO ROAD W12 • ASKEW ROAD AREA
£595,000 SHARE OF FREEHOLD



- 2 double bedrooms
- Refitted bathroom
- Extended reception space
- Kitchen open plan
- Oak floor
- Decked Garden
- Side access

Type
Ground floor garden flat

Gross internal floor area
732 sq ft / 68 sq approx.

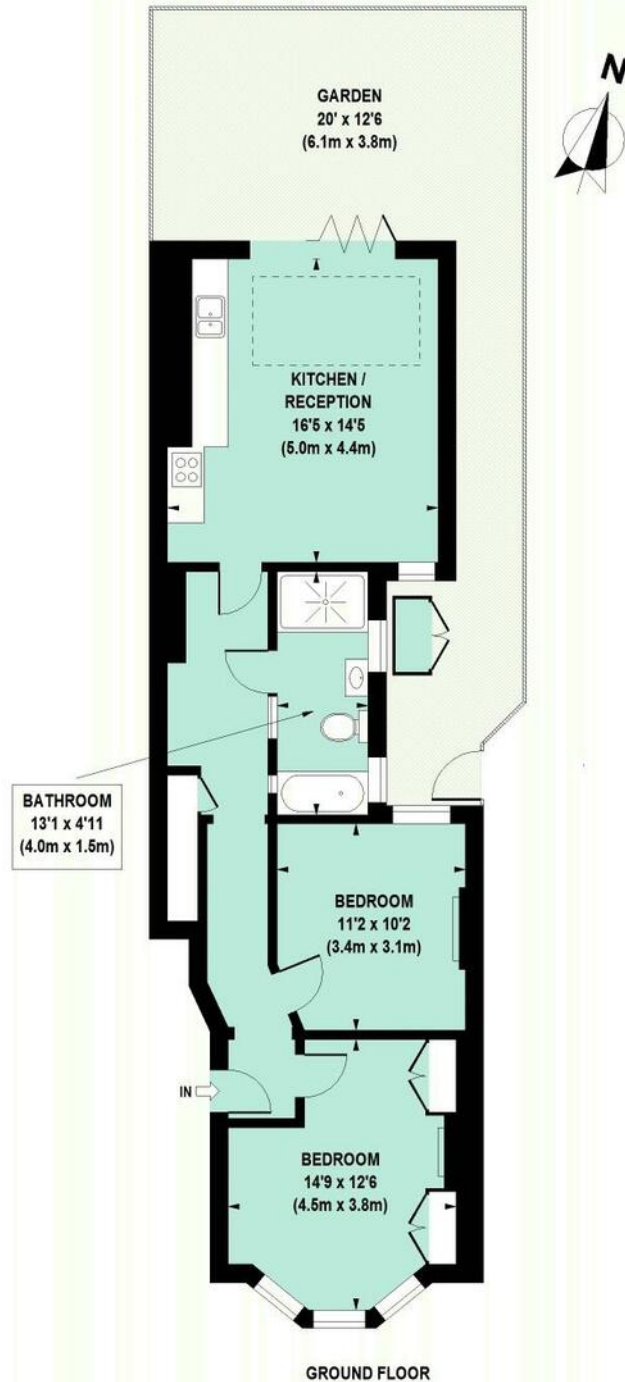
Nearest stations
Stamford Brook and Ravenscourt Park
(District Line) Shepherd's Bush
Market (Hamm. & City and Circle
Lines)

PHILIP WOOLLER

SOLD

St. Elmo Road, W12

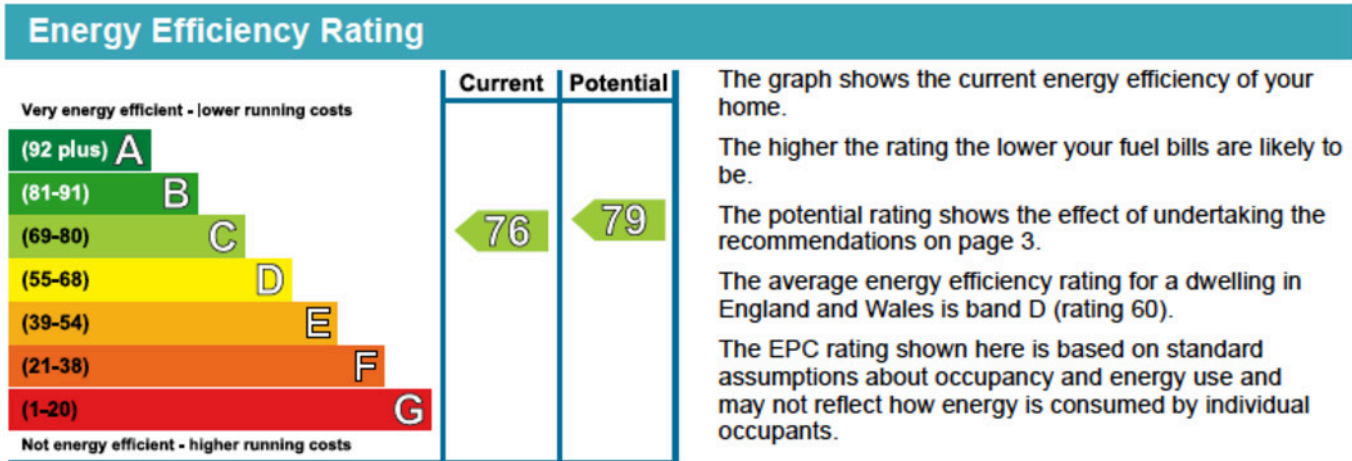
Approximate Gross Internal Area 68 sq m / 732 sq ft



Floor Plan produced for Philip Wooller by Mays Floorplans © . Tel 020 3397 4594
Illustration for identification purposes only, not to scale
All measurements are maximum, and include wardrobes and window bays where applicable

PHILIP WOOLLER

SOLD



IMPORTANT NOTICE

1. Particulars: These particulars are not an offer or contract, nor part of one. You should not rely on statements by Philip Wooller Ltd in the particulars or by word of mouth or in writing ('information') as being factually accurate about the property, its condition or its value. Neither Philip Wooller Ltd nor any joint agent has any authority to make any representations about the property, and accordingly any information given is entirely without responsibility on the part of the agents, seller(s) or lessor(s).
2. Photos etc: The photographs show

- only certain parts of the property as they appeared at the time they were taken. Areas, measurements and distances given are approximate only.
3. Regulations etc: Any reference to alternations to, or use of, any part of the property does not mean that any necessary planning, building regulations or other consent has been obtained. A buyer or lessee must find out by inspection or in other ways that these matters have been properly dealt with and that all information is correct.
4. VAT: The position relating to the property may change without notice.