

PHILIP WOOLLER

LET AGREED



UXBRIDGE ROAD W12 • SHEPHERD'S BUSH
£285 PW / £1235 PCM



- 1 double bedroom
- Bathroom
- 15' reception room
- Kitchen
- Split level layout
- Double glazed windows
- Close to tube stations

Type
First floor split level flat

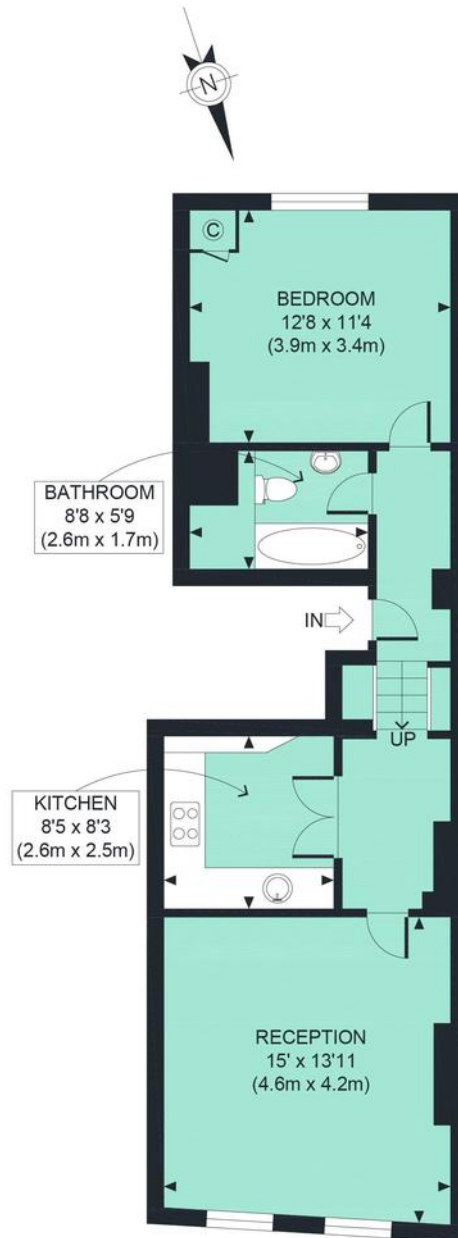
Gross internal floor area
577 sq ft / 54 sq m approx.

Nearest stations
Shepherd's Bush Market (Hamm.&City line) Shepherd's Bush (Mainline and Central Line tube)

Council Tax Band
D

PHILIP WOOLLER

LET AGREED



FIRST FLOOR
GROSS INTERNAL
FLOOR AREA 577 SQ FT

APPROX. GROSS INTERNAL FLOOR AREA 577 SQ FT / 54 SQM

Ref: PW

Copyright **photo**plan

Disclaimer: Floor plan measurements are approximate and are for illustrative purposes only. While we do not doubt the floor plan accuracy and completeness, you or your advisors should conduct a careful, independent investigation of the property in respect of monetary valuation

PHILIP WOOLLER

LET AGREED

IMPORTANT NOTICE

1. Particulars: These particulars are not an offer or contract, nor part of one. You should not rely on statements by Philip Wooller Ltd in the particulars or by word of mouth or in writing ('information') as being factually accurate about the property, its condition or its value. Neither Philip Wooller Ltd nor any joint agent has any authority to make any representations about the property, and accordingly any information given is entirely without responsibility on the part of the agents, seller(s) or lessor(s).

2. Photos etc: The photographs show

only certain parts of the property as they appeared at the time they were taken. Areas, measurements and distances given are approximate only.

3. Regulations etc: Any reference to alternations to, or use of, any part of the property does not mean that any necessary planning, building regulations or other consent has been obtained. A buyer or lessee must find out by inspection or in other ways that these matters have been properly dealt with and that all information is correct.

4. VAT: The position relating to the property may change without notice.