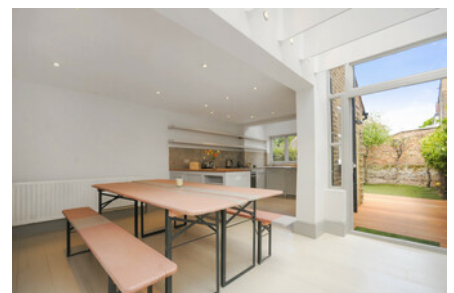
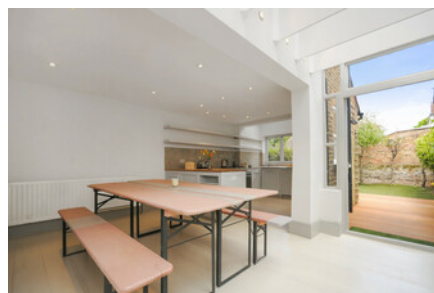
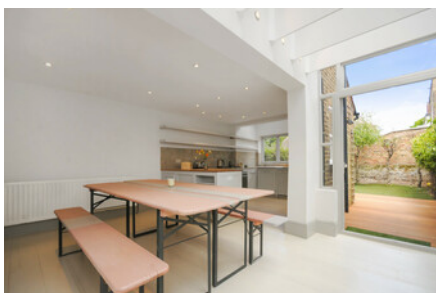


PHILIP WOOLLER

LET AGREED



WENDELL ROAD W12 • WENDELL PARK
£850 PW / £3683 PCM



- 4 bedrooms
- 2 bathrooms (1 en suite)
- Cloakroom / utility
- Double reception room
- Conservatory kitchen/dining room
- Basement study / playroom / storage
- Garden partly decked
- Roof terrace with outlook across Wendell Park

Type
Victorian family house

Gross internal floor area
1877 sq ft / 174 sq m approx.

Nearest stations
Stamford Brook (District Line) and
Turnham Green Terrace (District and
Piccadilly Lines)

Council Tax Band
F (£1727.01 PA)

PHILIP WOOLLER

LET AGREED



APPROX. GROSS INTERNAL FLOOR AREA 1877 SQ FT / 174 SQM
 Ref: PW Copyright photoplan

Disclaimer: Floor plan measurements are approximate and are for illustrative purposes only. While we do not doubt the floor plan accuracy and completeness, you or your advisors should conduct a careful, independent investigation of the property in respect of monetary valuation

PHILIP WOOLLER

LET AGREED

IMPORTANT NOTICE

1. Particulars: These particulars are not an offer or contract, nor part of one. You should not rely on statements by Philip Wooller Ltd in the particulars or by word of mouth or in writing ('information') as being factually accurate about the property, its condition or its value. Neither Philip Wooller Ltd nor any joint agent has any authority to make any representations about the property, and accordingly any information given is entirely without responsibility on the part of the agents, seller(s) or lessor(s).

2. Photos etc: The photographs show

only certain parts of the property as they appeared at the time they were taken. Areas, measurements and distances given are approximate only.

3. Regulations etc: Any reference to alternations to, or use of, any part of the property does not mean that any necessary planning, building regulations or other consent has been obtained. A buyer or lessee must find out by inspection or in other ways that these matters have been properly dealt with and that all information is correct.

4. VAT: The position relating to the property may change without notice.