

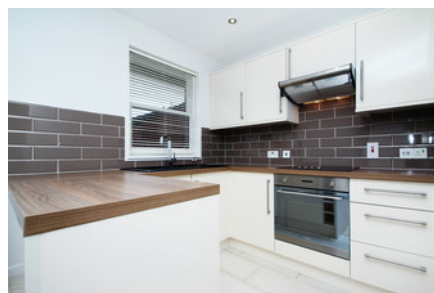
SALES • LETTINGS • MANAGEMENT

PHILIP WOOLLER

LET AGREED



MAYFIELD ROAD W12 • WENDELL PARK
£254 PW / £1,100 PCM



- 20' studio room
- Refitted kitchen open plan
- Shower room
- Top floor
- Recently refurbished
- PARKING SPACE

Type
Studio flat with private parking

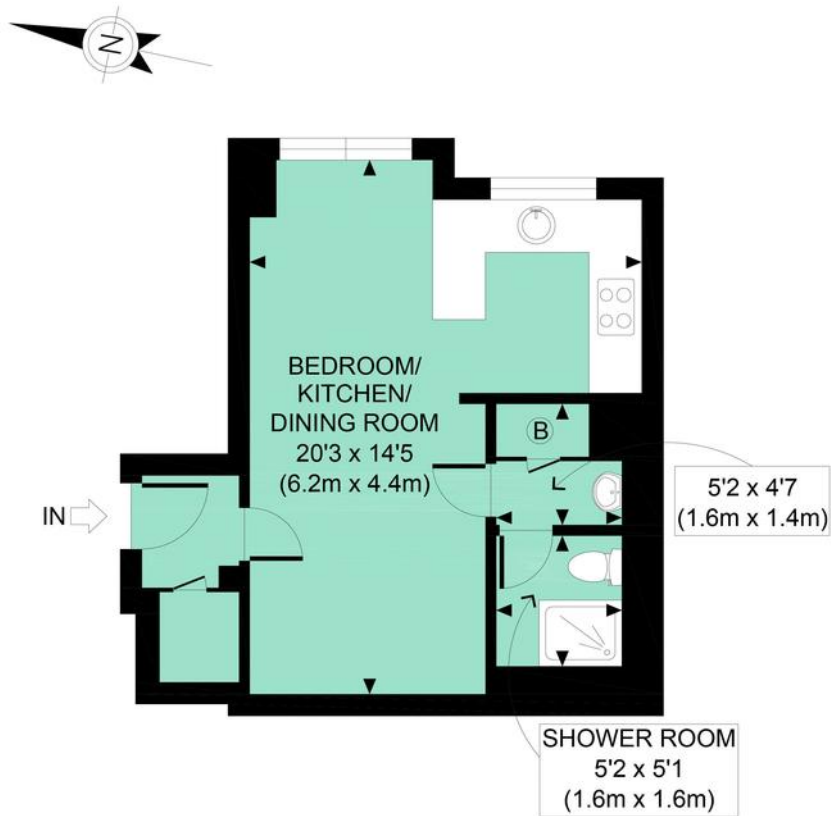
Gross internal floor area
319 sq ft / 30 sq m approx.

Nearest stations
Stamford Brook (District Line)

Council Tax Band
B (£841.97 PA)

PHILIP WOOLLER

LET AGREED



GROSS INTERNAL
FLOOR AREA 319 SQ FT

APPROX. GROSS INTERNAL FLOOR AREA 319 SQ FT / 30 SQM

Ref: PW

Copyright **photo**plan

Disclaimer: Floor plan measurements are approximate and are for illustrative purposes only. While we do not doubt the floor plan accuracy and completeness, you or your advisors should conduct a careful, independent investigation of the property in respect of monetary valuation

PHILIP WOOLLER

LET AGREED

IMPORTANT NOTICE

1. Particulars: These particulars are not an offer or contract, nor part of one. You should not rely on statements by Philip Wooller Ltd in the particulars or by word of mouth or in writing ('information') as being factually accurate about the property, its condition or its value. Neither Philip Wooller Ltd nor any joint agent has any authority to make any representations about the property, and accordingly any information given is entirely without responsibility on the part of the agents, seller(s) or lessor(s).

2. Photos etc: The photographs show

only certain parts of the property as they appeared at the time they were taken. Areas, measurements and distances given are approximate only.

3. Regulations etc: Any reference to alternations to, or use of, any part of the property does not mean that any necessary planning, building regulations or other consent has been obtained. A buyer or lessee must find out by inspection or in other ways that these matters have been properly dealt with and that all information is correct.

4. VAT: The position relating to the property may change without notice.