

PHILIP WOOLLER

SALE AGREED



AYLMER ROAD W12 • WENDELL PARK
£845,000 SHARE OF FREEHOLD



- 3 bedrooms
- Bathroom
- Shower room en suite
- Reception room
- Kitchen / dining room
- Well maintained private garden
- New decorative finishes and bathrooms
- Some new sash windows

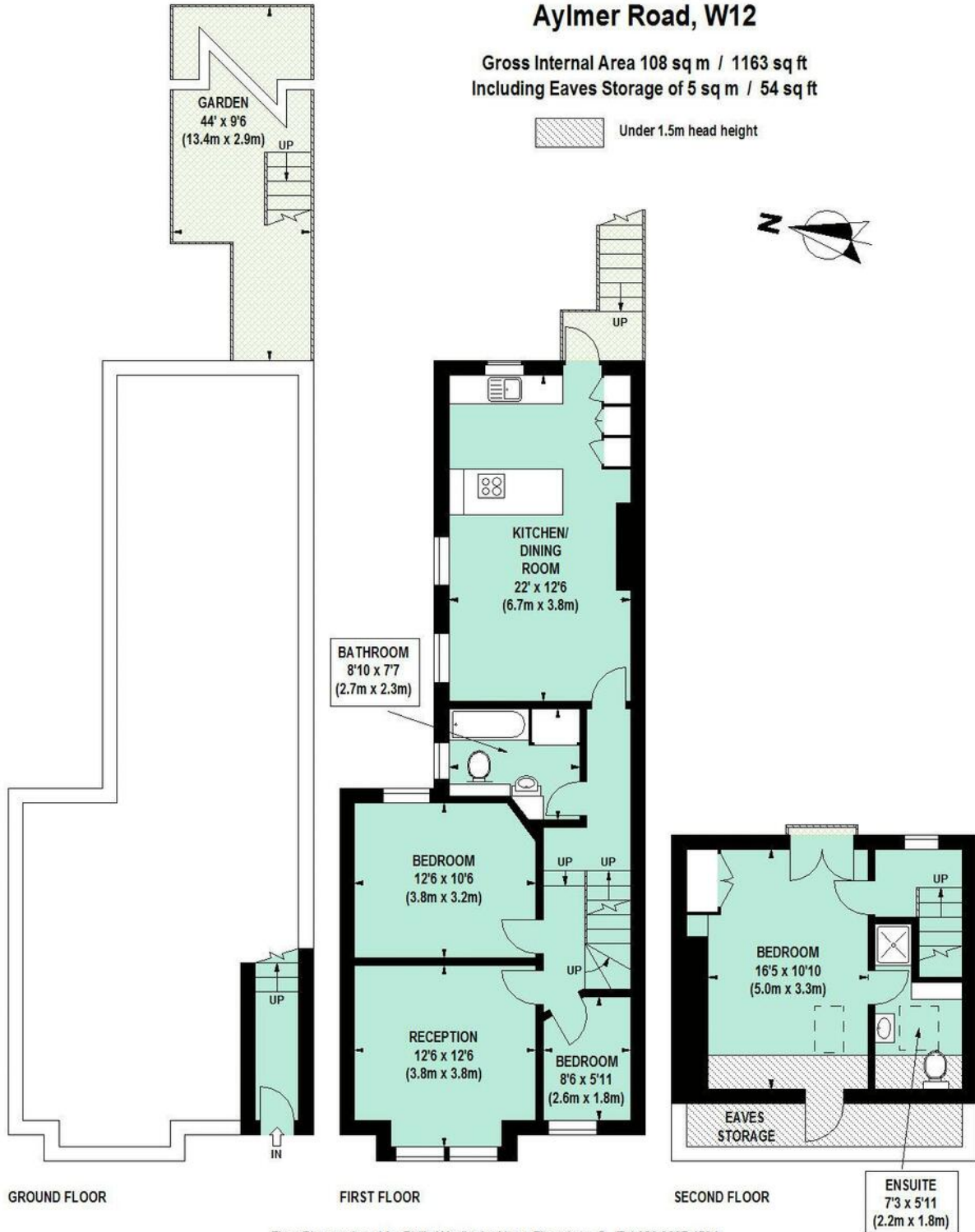
Type
Purpose built Edwardian maisonette

Gross internal floor area
1163 sq ft / 108 sq m approx.

Nearest stations
Stamford Brook and Ravenscourt Park
(District Line) and Turnham Green
Terrace (District and Piccadilly Lines)

PHILIP WOOLLER

SALE AGREED



Floor Plan produced for Philip Wooller by Mays Floorplans © . Tel 020 3397 4594
Illustration for identification purposes only, not to scale
All measurements are maximum, and include wardrobes and window bays where applicable

PHILIP WOOLLER

SALE AGREED

IMPORTANT NOTICE

1. Particulars: These particulars are not an offer or contract, nor part of one. You should not rely on statements by Philip Wooller Ltd in the particulars or by word of mouth or in writing ('information') as being factually accurate about the property, its condition or its value. Neither Philip Wooller Ltd nor any joint agent has any authority to make any representations about the property, and accordingly any information given is entirely without responsibility on the part of the agents, seller(s) or lessor(s).

2. Photos etc: The photographs show

only certain parts of the property as they appeared at the time they were taken. Areas, measurements and distances given are approximate only.

3. Regulations etc: Any reference to alternations to, or use of, any part of the property does not mean that any necessary planning, building regulations or other consent has been obtained. A buyer or lessee must find out by inspection or in other ways that these matters have been properly dealt with and that all information is correct.

4. VAT: The position relating to the property may change without notice.