

# PHILIP WOOLLER

## LET AGREED



KEITH GROVE W12 • ASKEW ROAD AREA  
£500 PW / £2166 PCM



- 3 double bedrooms
- 2 bathrooms ( 1 en suite )
- Reception room (full width)
- Kitchen / dining room
- Spacious top floor master suite
- Available immediately

Type  
Upper maisonette

Gross internal floor area  
1141 sq ft / 106 sq m approx.

Nearest stations  
Shepherd's Bush Market (Hamm. & City and Circle Lines) Shepherd's Bush (Central Line)

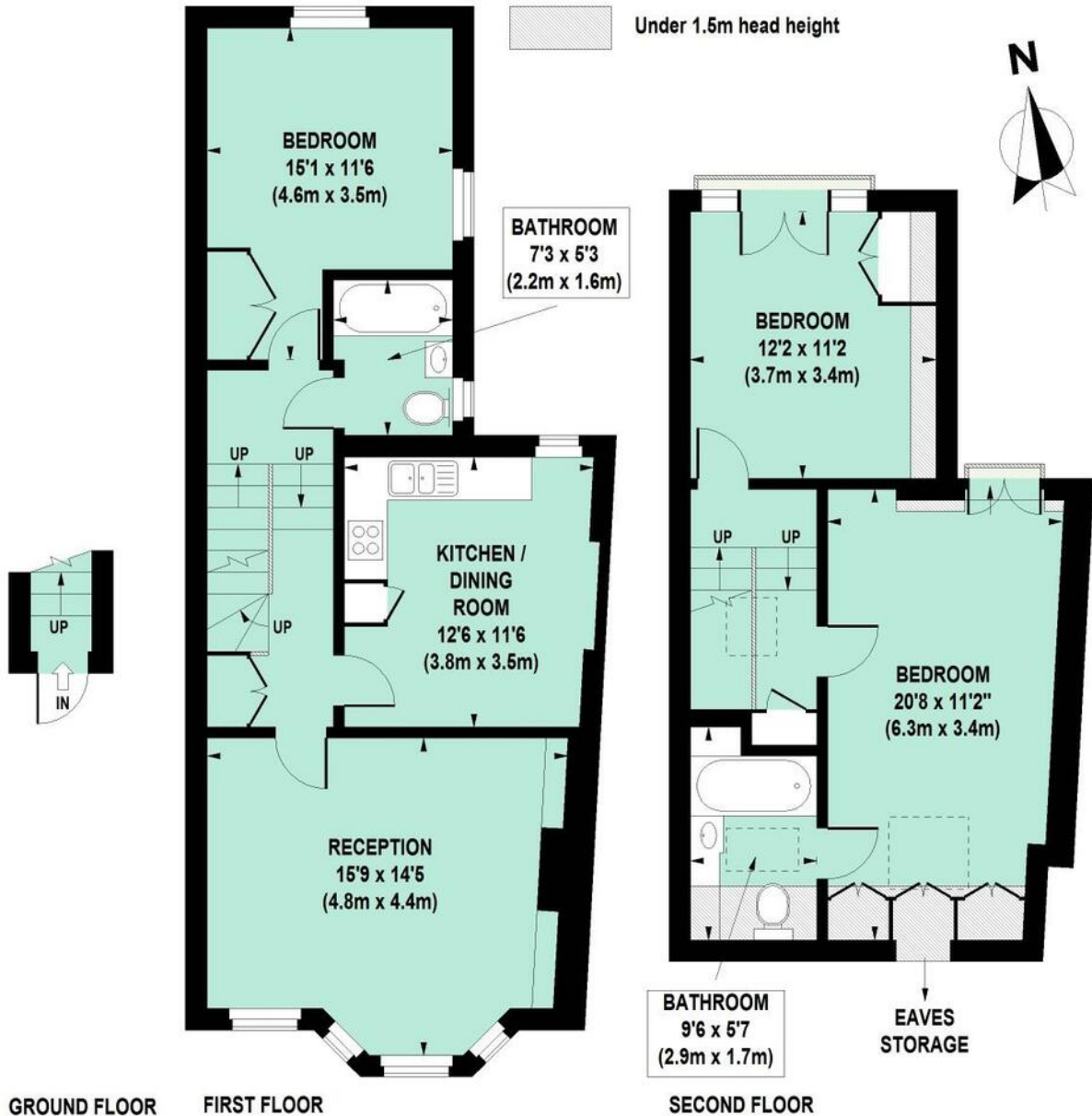
Council Tax Band  
D ( £1082.53 PA )

# PHILIP WOOLLER

## LET AGREED

### Keith Grove, W12

Approximate Gross Internal Area 106 sq m / 1141 sq ft



Floor Plan produced for Philip Wooller by Mays Floorplans © . Tel 020 3397 4594  
Illustration for identification purposes only, not to scale  
All measurements are maximum, and include wardrobes and window bays where applicable

# PHILIP WOOLLER

## LET AGREED

### IMPORTANT NOTICE

---

1. Particulars: These particulars are not an offer or contract, nor part of one. You should not rely on statements by Philip Wooller Ltd in the particulars or by word of mouth or in writing ('information') as being factually accurate about the property, its condition or its value. Neither Philip Wooller Ltd nor any joint agent has any authority to make any representations about the property, and accordingly any information given is entirely without responsibility on the part of the agents, seller(s) or lessor(s).

2. Photos etc: The photographs show

---

only certain parts of the property as they appeared at the time they were taken. Areas, measurements and distances given are approximate only.

3. Regulations etc: Any reference to alternations to, or use of, any part of the property does not mean that any necessary planning, building regulations or other consent has been obtained. A buyer or lessee must find out by inspection or in other ways that these matters have been properly dealt with and that all information is correct.

4. VAT: The position relating to the property may change without notice.