

PHILIP WOOLLER

LET AGREED



FLANCHFORD ROAD W12 • STAMFORD BROOK
£1100 PW / £4766 PCM



- 5 double bedrooms
- Bathroom and shower room
- 2 separate WC's
- Double reception room
- Study
- Kitchen / dining room
- Generous garden with side access
- Eaves storage

Type
Edwardian semi detached family house

Gross internal floor area
2175 sq ft / 202 sq m approx.

Nearest stations
Stamford Brook (District Line) and
Turnham Green Terrace (District and
Piccadilly Lines)


Council Tax Band
G (£1992.70 PA)

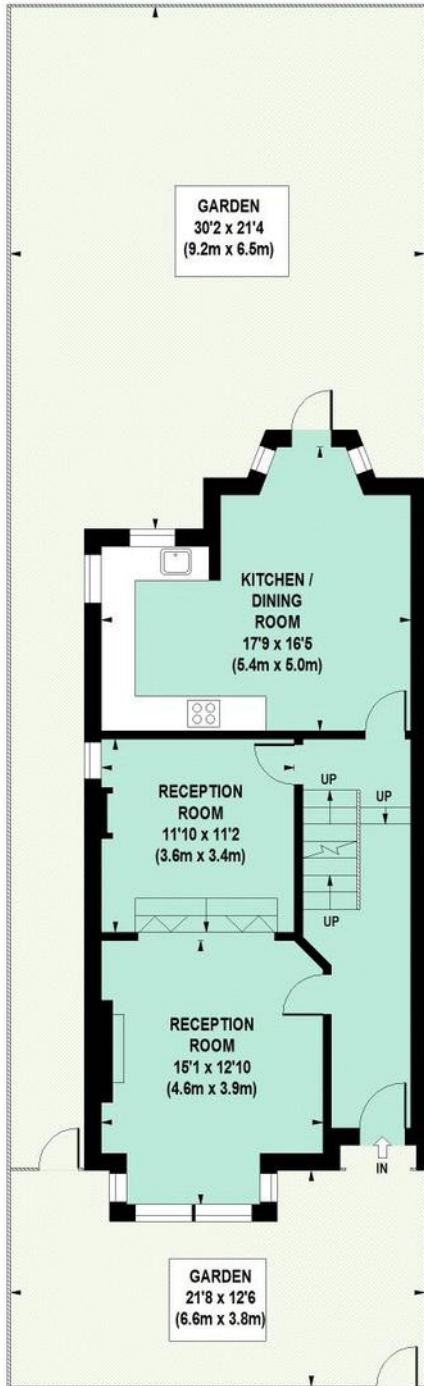
PHILIP WOOLLER

LET AGREED

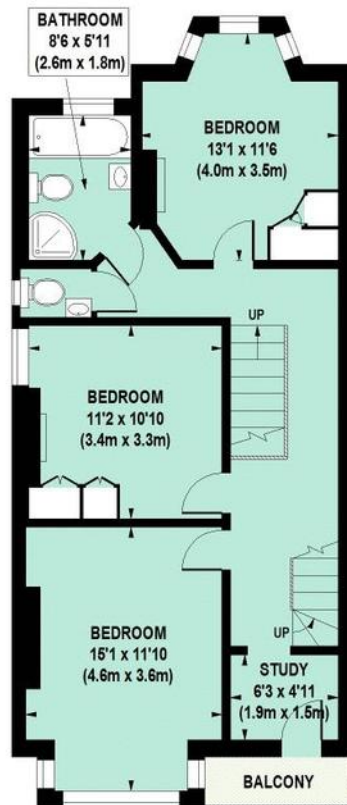
Flanchford Road, W12

Approximate Gross Internal Area 202 sq m / 2175 sq ft

 Under 1.5m head height



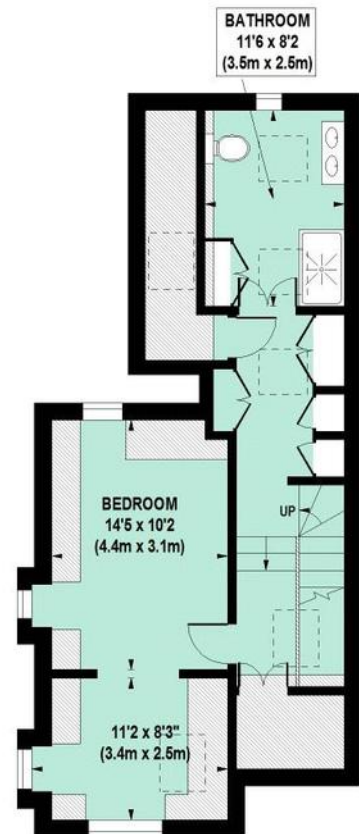
GROUND FLOOR



FIRST FLOOR



LOWER GROUND FLOOR



SECOND FLOOR

Floor Plan produced for Philip Wooller by Mays Floorplans © . Tel 020 3397 4594
Illustration for identification purposes only, not to scale
All measurements are maximum, and include wardrobes and window bays where applicable

PHILIP WOOLLER

LET AGREED

IMPORTANT NOTICE

1. Particulars: These particulars are not an offer or contract, nor part of one. You should not rely on statements by Philip Wooller Ltd in the particulars or by word of mouth or in writing ('information') as being factually accurate about the property, its condition or its value. Neither Philip Wooller Ltd nor any joint agent has any authority to make any representations about the property, and accordingly any information given is entirely without responsibility on the part of the agents, seller(s) or lessor(s).

2. Photos etc: The photographs show

only certain parts of the property as they appeared at the time they were taken. Areas, measurements and distances given are approximate only.

3. Regulations etc: Any reference to alternations to, or use of, any part of the property does not mean that any necessary planning, building regulations or other consent has been obtained. A buyer or lessee must find out by inspection or in other ways that these matters have been properly dealt with and that all information is correct.

4. VAT: The position relating to the property may change without notice.