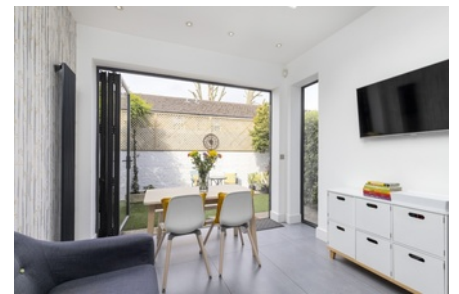


# PHILIP WOOLLER

## FOR SALE



AGNES ROAD W3 • ASKEW ROAD AREA  
£1,100,000 FREEHOLD



- 5 double bedrooms
- 2 bathrooms
- Double reception room with fireplaces
- Kitchen / dining room
- Eaves storage
- West facing garden plus side return
- Excellent finishes throughout
- Double glazed sash windows
- Side access

Type  
Edwardian semi detached family house

Gross internal floor area  
1615 sq ft / 150 sq m approx.

Nearest stations  
Stamford Brook (District Line)  
Shepherd's Bush Market (Hamm. &  
City and Circle Lines) East Acton  
(Central Line) Acton Central  
(Overground)

# PHILIP WOOLLER

## FOR SALE



Floor Plan produced for Philip Wooller by Mays Floorplans © . Tel 020 3397 4594  
Illustration for identification purposes only, not to scale  
All measurements are maximum, and include wardrobes and window bays where applicable

# PHILIP WOOLLER

## FOR SALE

### IMPORTANT NOTICE

---

1. Particulars: These particulars are not an offer or contract, nor part of one. You should not rely on statements by Philip Wooller Ltd in the particulars or by word of mouth or in writing ('information') as being factually accurate about the property, its condition or its value. Neither Philip Wooller Ltd nor any joint agent has any authority to make any representations about the property, and accordingly any information given is entirely without responsibility on the part of the agents, seller(s) or lessor(s).

2. Photos etc: The photographs show

---

only certain parts of the property as they appeared at the time they were taken. Areas, measurements and distances given are approximate only.

3. Regulations etc: Any reference to alternations to, or use of, any part of the property does not mean that any necessary planning, building regulations or other consent has been obtained. A buyer or lessee must find out by inspection or in other ways that these matters have been properly dealt with and that all information is correct.

4. VAT: The position relating to the property may change without notice.