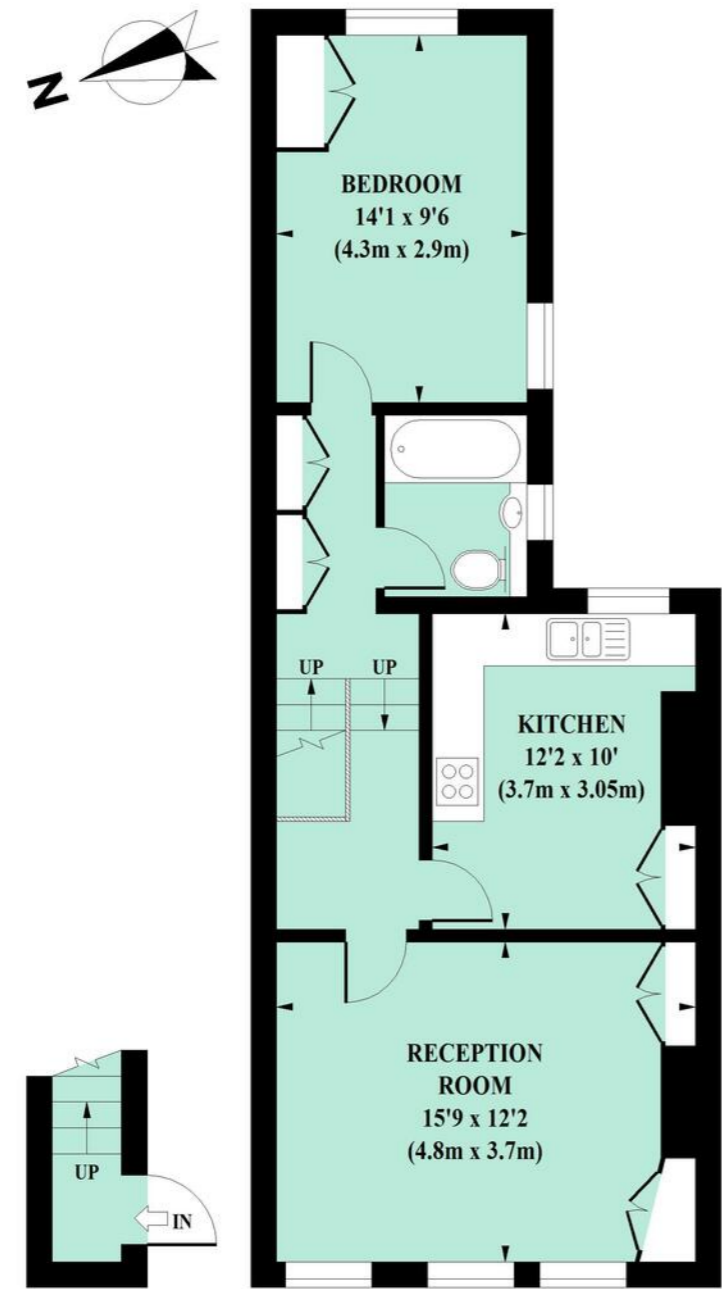


Percy Road, W12

Approximate Gross Internal Area 58 sq m / 624 sq ft



FIRST FLOOR
ENTRANCE

SECOND FLOOR

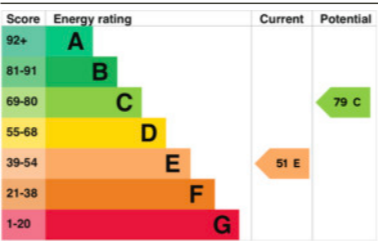
Floor Plan produced for Philip Wooller by Mays Floorplans © . Tel 020 3397 4594
Illustration for identification purposes only, not to scale
All measurements are maximum, and include wardrobes and window bays where applicable

IMPORTANT NOTICE

1. Particulars: These particulars are not an offer or contract, nor part of one. You should not rely on statements by Philip Wooller Ltd in the particulars or by word of mouth or in writing ('information') as being factually accurate about the property, its condition or its value. Neither Philip Wooller Ltd nor any joint agent has any authority to make any representations about the property, and accordingly any information given is entirely without responsibility on the part of the agents, seller(s) or lessor(s).
2. Photos etc: The photographs show only certain parts of the property as they appeared at

the time they were taken. Areas, measurements and distances given are approximate only.
3. Regulations etc: Any reference to alterations to, or use of, any part of the property does not mean that any necessary planning, building regulations or other consent has been obtained. A buyer or lessee must find out by inspection or in other ways that these matters have been properly dealt with and that all information is correct.
4. VAT: The position relating to the property may change without notice.

EPC



SALES • LETTINGS • MANAGEMENT

PHILIP WOOLLER
FOR SALE



PERCY ROAD W12 • ASKEW ROAD AREA
£465,000 SHARE OF FREEHOLD

- Potential to reconfigure as a 2 bed
- Currently - 1 double bedroom
- Bathroom
- Reception room
- Kitchen-dining room
- Built-in storage
- Share of freehold - 966 years remaining
- EPC - E

Type
Top floor flat

Gross internal floor area
624 sq ft / 54 sq approx.

Nearest stations
Stamford Brook (District Line) Goldhawk Road (Hamm & City and Circle Lines)



A light, spacious one bedroom split level flat with a modern feel. There are three flats in total in this building each with share of freehold, all with a very long underlying lease. Entering on the first floor, stairs rise to the 2nd floor where there is a generously wide reception at the front, kitchen-dining room in the middle and bedroom and bathroom at the rear. The hallway provides good communication space and additional built-in storage. The loft offers scope for conversion assuming an agreement can be reached to acquire the other freeholder's interest in the space - along with necessary consents. The flat is situated towards the southern end of Percy Road just off the villagey Askew Road. Ravenscourt and Wendell Park are close by - as are the further shopping and transport hubs of Hammersmith and Westfield. The east-west 94 bus routes and Goldhawk Road or Stamford Brook tube are all within an approx. 10 minute walk.

