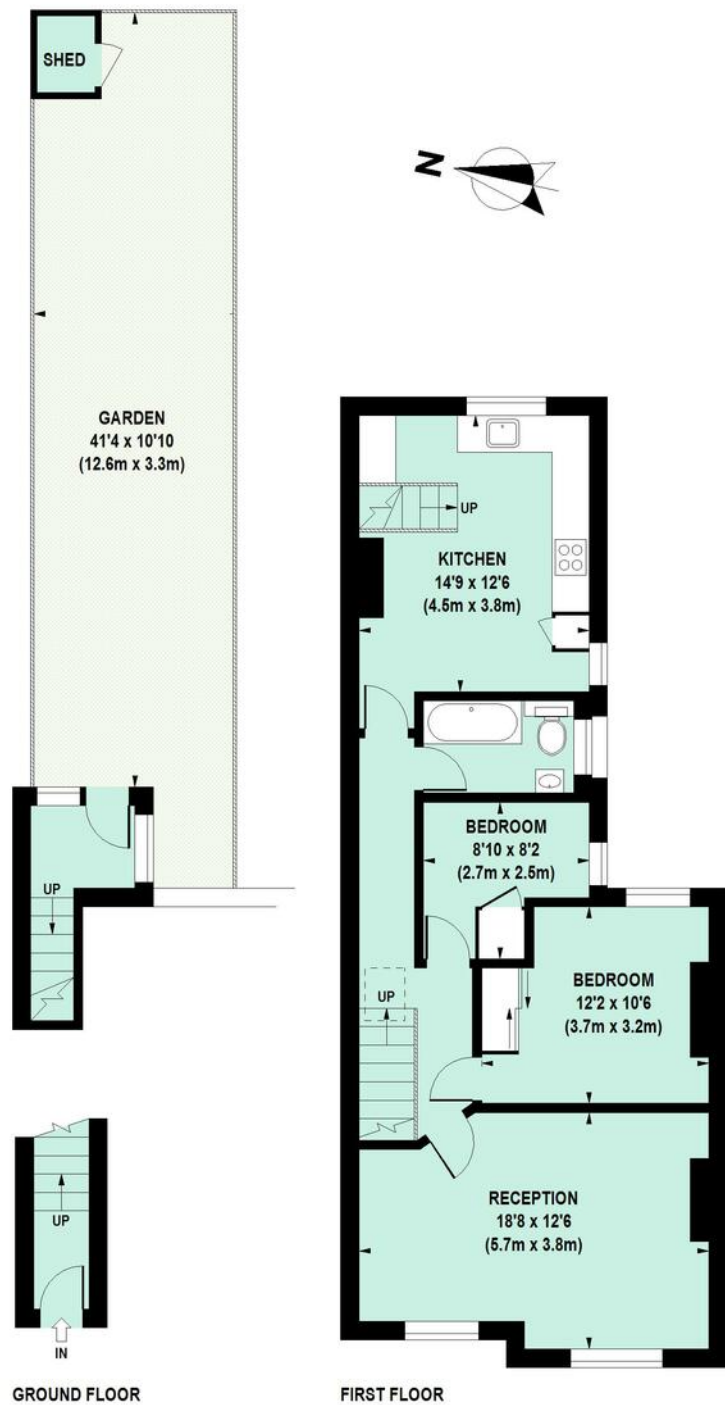


Aylmer Road, W12

Approximate Gross Internal Area 76 sq m / 818 sq ft



Floor Plan produced for Philip Wooller by Mays Floorplans © . Tel 020 3397 4594
Illustration for identification purposes only, not to scale
All measurements are maximum, and include wardrobes and window bays where applicable

IMPORTANT NOTICE

1. Particulars: These particulars are not an offer or contract, nor part of one. You should not rely on statements by Philip Wooller Ltd in the particulars or by word of mouth or in writing ('information') as being factually accurate about the property, its condition or its value. Neither Philip Wooller Ltd nor any joint agent has any authority to make any representations about the property, and accordingly any information given is entirely without responsibility on the part of the agents, seller(s) or lessor(s).
2. Photos etc: The photographs show only certain parts of the property as they appeared at

the time they were taken. Areas, measurements and distances given are approximate only.
3. Regulations etc: Any reference to alterations to, or use of, any part of the property does not mean that any necessary planning, building regulations or other consent has been obtained. A buyer or lessee must find out by inspection or in other ways that these matters have been properly dealt with and that all information is correct.
4. VAT: The position relating to the property may change without notice.

SALES • LETTINGS • MANAGEMENT

PHILIP WOOLLER
FOR SALE



AYLMER ROAD W12 • ASKEW ROAD AREA
£675,000 SHARE OF FREEHOLD

- Double bedroom
- Single bedroom / study
- Reception room
- Kitchen / dining room
- Bathroom
- 41' Garden with shed
- Potential for loft extension STPP
- Own entrance

Type
Edwardian upper maisonette

Gross internal floor area
818 sq ft / 76 sq m approx

Nearest stations
Stamford Brook (District Line) Turnham
Green (District & Piccadilly lines)



This Edwardian upper maisonette is well decorated with oak floor throughout. It has a generous full width reception room, lovely garden and great light all round. The eat-in kitchen and bathroom are modern with good quality fittings and the whole flat has a cared for and homely feel. The good sized gardens at the rear (east facing on this side of street) are delightful and are one of the advantages of this popular and quiet street. Aylmer Road is tree lined and tucked away between Cobbold and Wendell Road. Askew Road, Ravenscourt and Wendell Park are within a short walk, as is Chiswick High Road with all its amenities. The area has numerous good schools and the shopping and transport hubs of Hammersmith and Westfield are close by. Stamford Brook tube (District Line) is an approximate 10 minute walk - and Turnham Green tube and shops a little further afield.

