

Landor Walk, W12

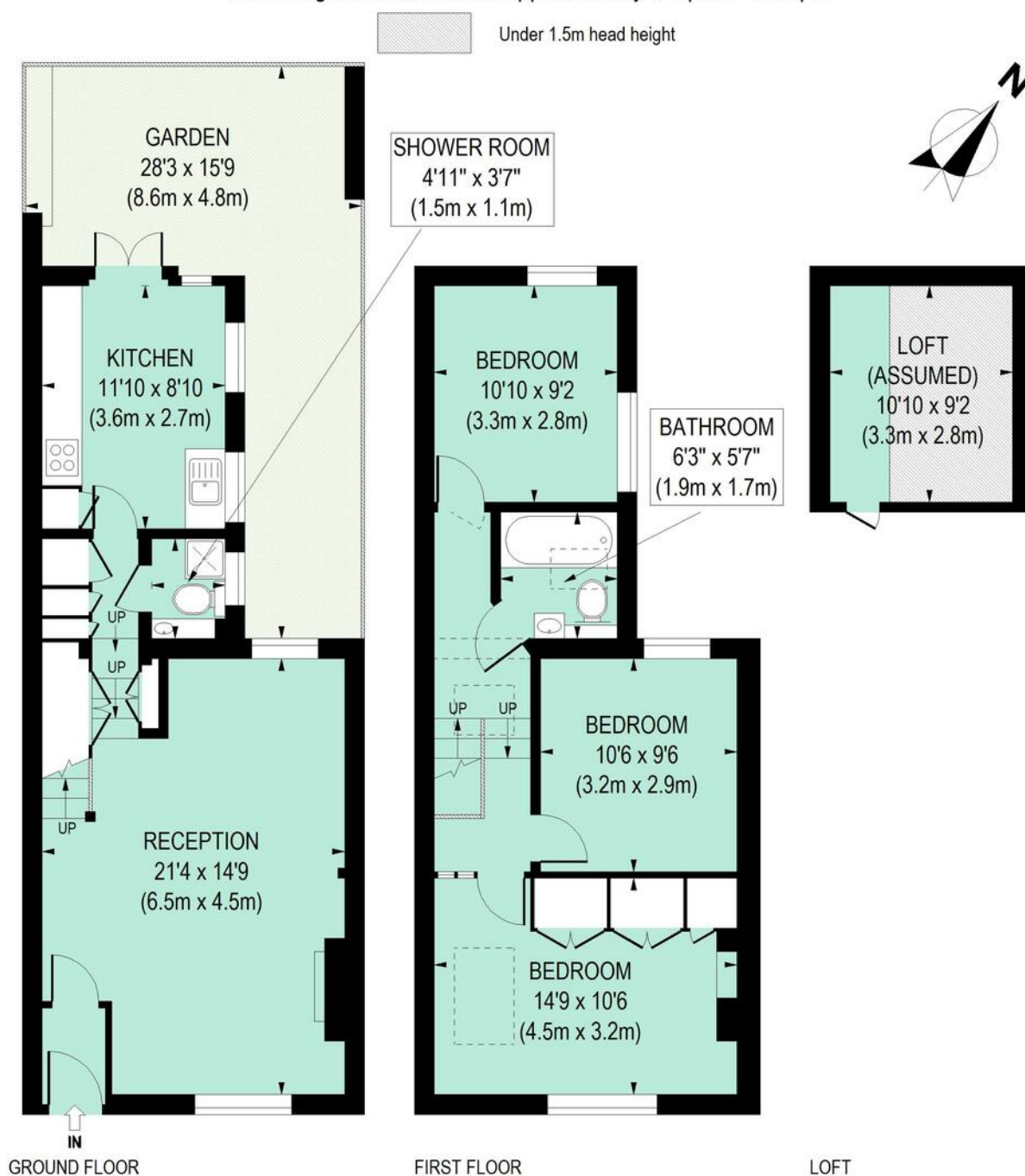
Approximate Gross Internal Area 91 sq m / 980 sq ft
Excluding Assumed Loft of Approximately 9 sq m / 97 sq ft

SALES • LETTINGS • MANAGEMENT

PHILIP WOOLLER FOR SALE



LANDOR WALK W12 • ASKEW ROAD AREA
£895,000 FREEHOLD

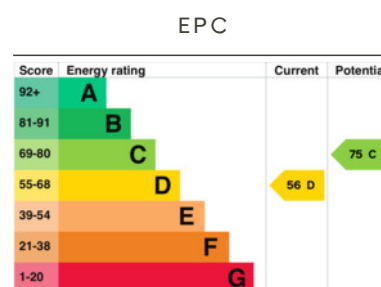


Floor Plan produced for Philip Wooller by Mays Floorplans © . Tel 020 3397 4594
Illustration for identification purposes only, not to scale
All measurements are maximum, and include wardrobes and window bays where applicable

IMPORTANT NOTICE

1. Particulars: These particulars are not an offer or contract, nor part of one. You should not rely on statements by Philip Wooller Ltd in the particulars or by word of mouth or in writing ('information') as being factually accurate about the property, its condition or its value. Neither Philip Wooller Ltd nor any joint agent has any authority to make any representations about the property, and accordingly any information given is entirely without responsibility on the part of the agents, seller(s) or lessor(s).
2. Photos etc: The photographs show only certain parts of the property as they appeared at

the time they were taken. Areas, measurements and distances given are approximate only.
3. Regulations etc: Any reference to alterations to, or use of, any part of the property does not mean that any necessary planning, building regulations or other consent has been obtained. A buyer or lessee must find out by inspection or in other ways that these matters have been properly dealt with and that all information is correct.
4. VAT: The position relating to the property may change without notice.



- 3 double bedrooms
- Bathroom and shower room/WC
- Double reception with stripped floorboards
- Tidy utility / storage cupboards
- Kitchen / breakfast onto walled garden
- Delightful secluded garden
- Vaulted ceilings and exposed timbers
- Extensive under floor storage
- EPC - D

Type
Charming Early Victorian cottage

Gross internal floor area
980 sq ft / 91 sq m approx.

Nearest stations
Stamford Brook (District Line) Shepherd's Bush Market (Hamm & City and Circle Lines)rd



A delightful flat fronted period cottage, larger than expected and full of architectural character - with vaulted ceilings and tastefully exposed beams which enhance light and volume. The property has been much loved and has an opened up double reception with fireplace with steps down a kitchen/dining room on the garden level, which offers potential to extend into the side return subject to the necessary consents. Notably there are three double bedrooms served by a bathroom and a shower room - unusual for properties of this type - ideal for children or guests. Landor Walk resembles a more Georgian looking mews and is tucked away in a quiet side street between Askew Road and Curwen Road, where this picturesque row of cottages predate everything around them. It is an approximate 15 minute walk to Ravenscourt Park or Stamford Brook (District Line tube), and 5 minutes from the 94 bus route east and west on Goldhawk Road, which gives ease of access to Westfield and The Central Line tube and mainline stations. Two additional bus routes on the doorstep in Askew Road connect to Hammersmith Broadway in a 10 minute journey..

